



E&V ID W-02QHM1

Villa next to golf course with sea view

NUMBER OF ROOMS

4

TOTAL SURFACE

approx. 167.7 m²

ASKING PRICE

675,000 EUR

PLOT SURFACE

approx. 358 m²



Property Details

Number of Rooms

4

Asking price

675,000 EUR

Total Surface

approx. 167.7 m²

Plot Surface

approx. 358 m²

Number of Bedrooms

3

Total Number of Bathrooms

4



Property Description

This cozy villa, part of Praia d'El Rey Golf & Beach Resort, situated next to the golf course, has all the features you are looking for. The property has typical Portuguese architecture and a very generous outdoor area.

Upon entering, you will find a large living and dining room and a bathroom. Still on the ground floor, two ensuite bedrooms and a

fully equipped kitchen.

Upstairs, the master suite has golf and sea views through the balcony.

The unobstructed patio also has golf and sea views and a heated swimming pool.



Location Description

Praia d'El Rey Golf & Beach Resort is only 25 minutes away from the nearest towns: the historical village of Óbidos and the renowned water sports resort Peniche.

Just one hour from Lisbon airport, the property is set within an internationally renowned golf and beach resort, with in-house

infrastructure and services just 10 minutes away.

Here you will enjoy over 300 days of sunshine a year and you will not be disappointed by the glow of the Atlantic Ocean lighting up your evening.













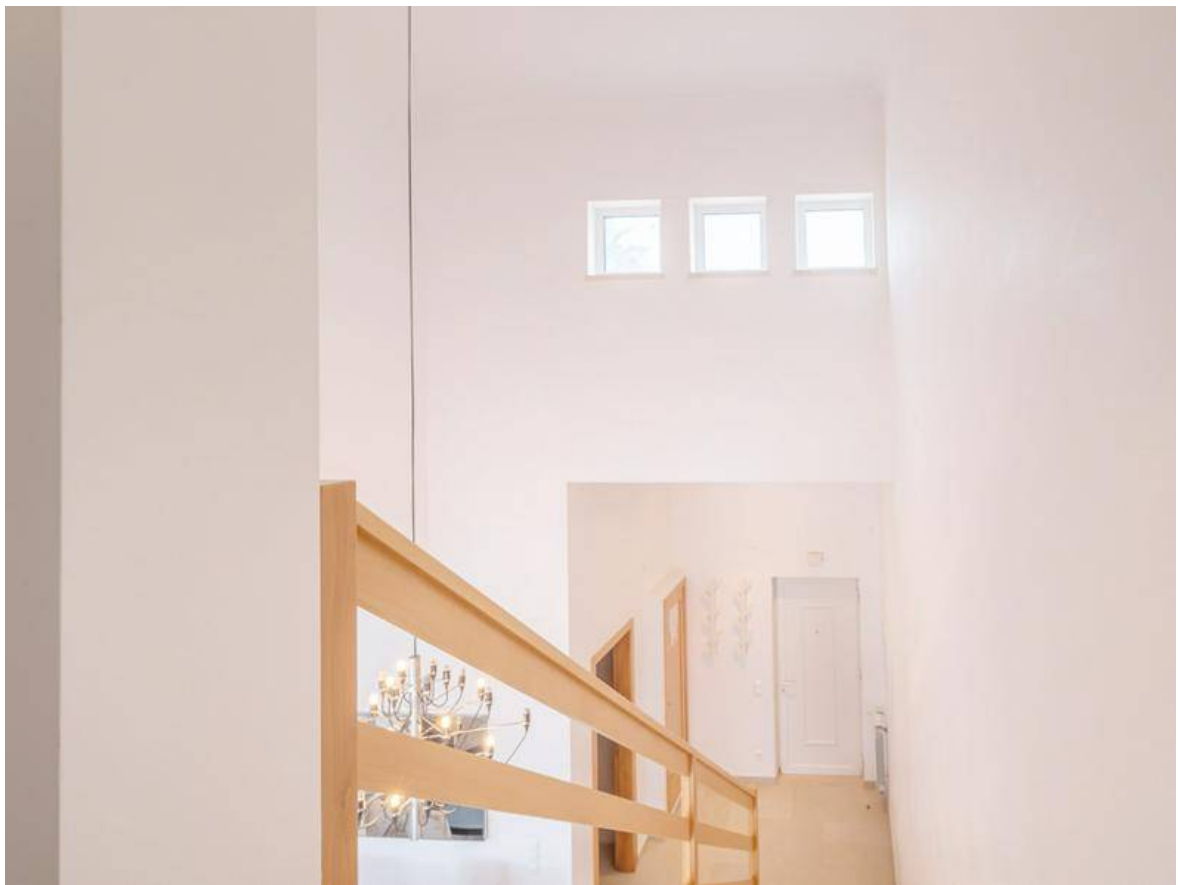
























Commission Text

The exact conditions of the interior or exterior may differ from the presented photographs. This material is based upon information which we consider reliable, but because it has been supplied by third parties, we cannot guarantee that it is accurate or complete at all times, whereas we cannot be held responsible for this fact. This offer may be subject to errors, omissions, change of price or withdrawal without prior notice, for which we cannot be held responsible.

